

# Whats new at AFT ?

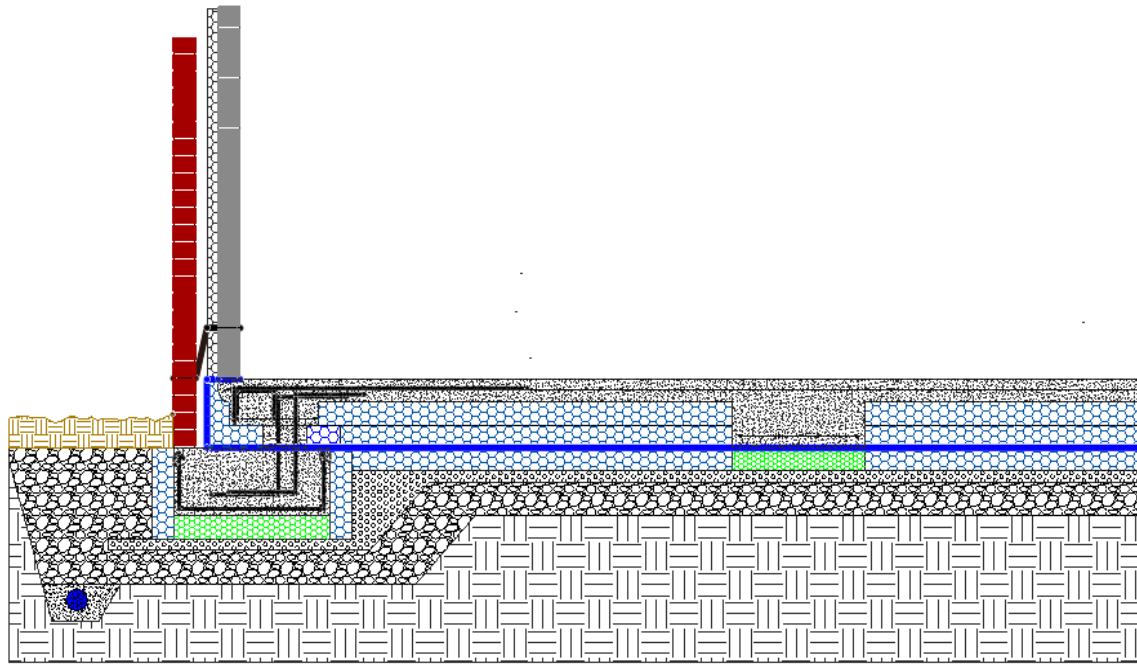
Completely new and innovative insulated raft designs with outstanding thermal performance to solve your foundation problems.

# New Groundshield MB - Monobeam

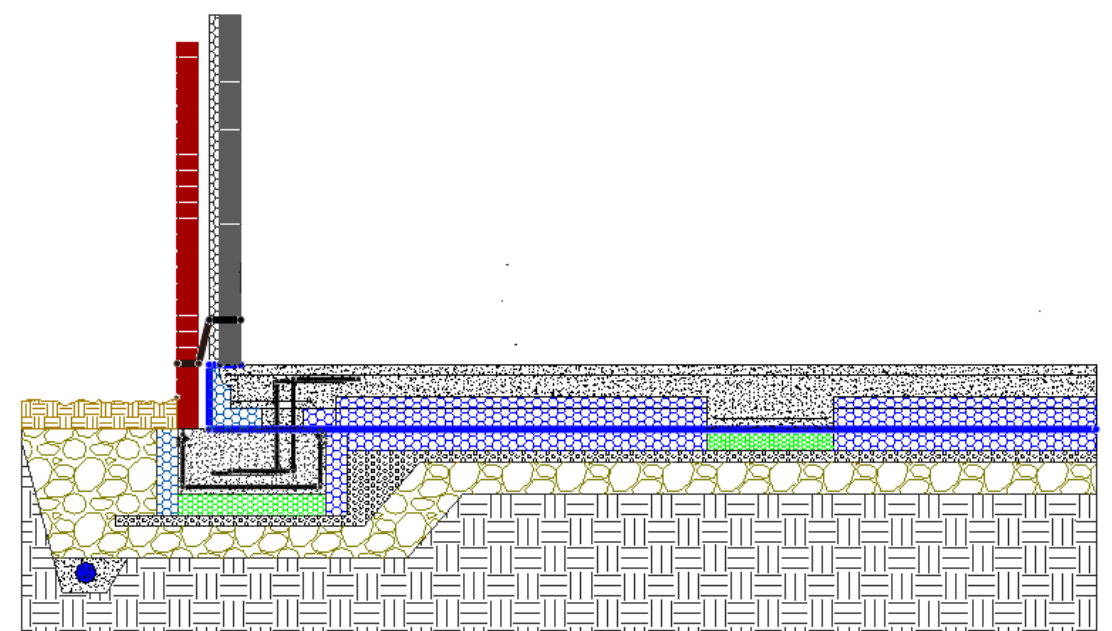
One Beam

Two walls

Low Thermal Bridge



Groundshield MB section Brick and Block

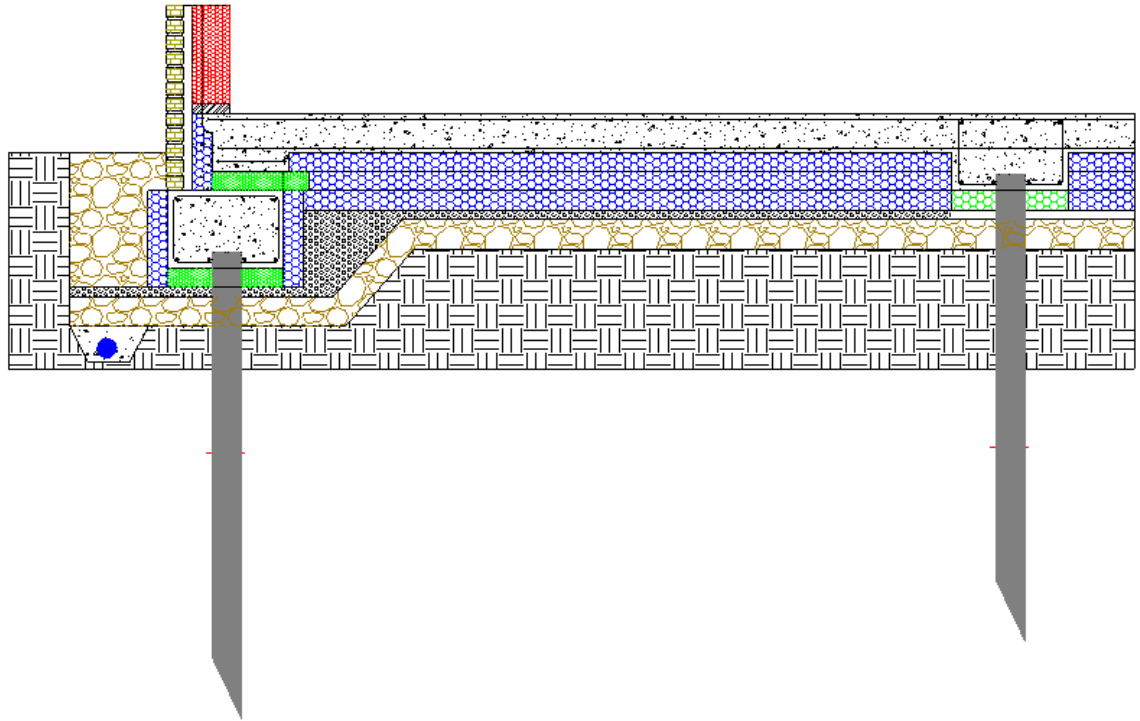


NHBC Compliant -- Groundshield MB section Brick and Block

# Monobeam Features

- High load capacity
- Thin slab
- Low thermal bridge result
- Simple install
- Lightweight components

# Groundshield MB – Monobeam on piles - Suspended slab



Groundshield MB Self supporting on piles

# Groundshield MB– With suspended slab on piles

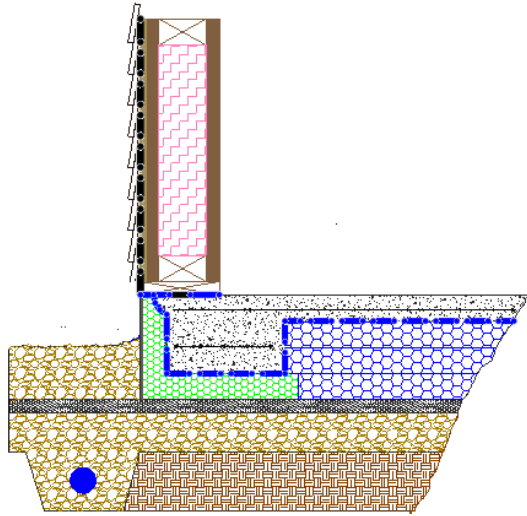
- Ideal in poor ground conditions
- Reduced siteworks
- Lightweight, moisture resistant EPS components
- U value  $>0.1 \text{ W/m}^2\text{K}$

# Groundshield L

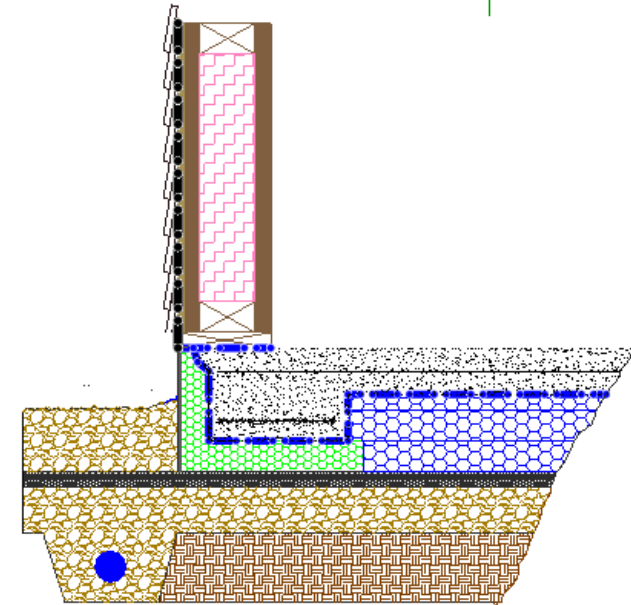
One Beam

Ground supported

Low Thermal Bridges



Groundshield section L



NHBC Compliant - Groundshield L

# Groundshield L

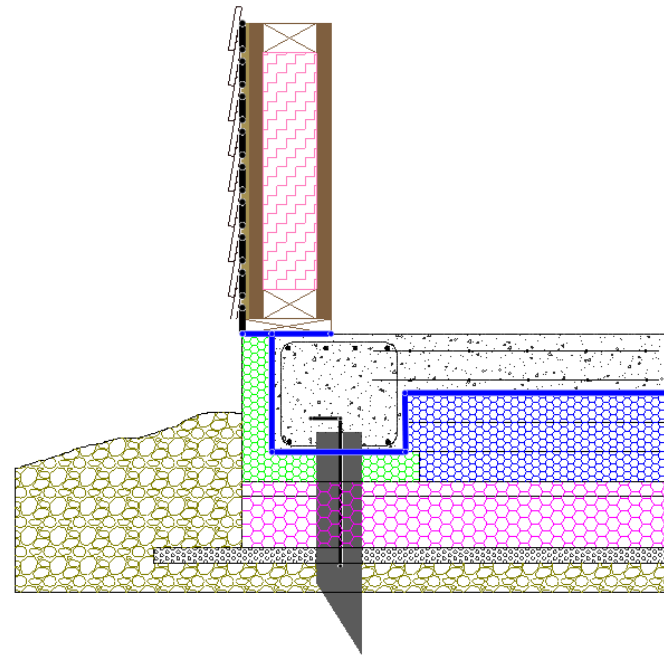
- One pour
- 100mm slab
- 3 days x 3 men installation for a 'Typical house'
- Lightweight, moisture resistant EPS components
- U value  $>0.1 \text{ W/m}^2\text{K}$

# Groundshield L – Self supporting on Piles

One Beam

One pour

Low Thermal  
Bridges



Groundshield section L on piles



# Groundshield L – on piles – Timber Frame

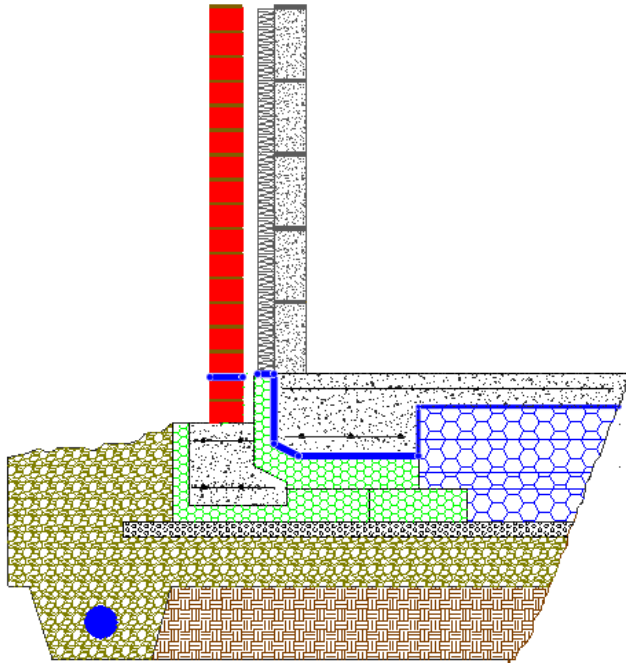
- Possible in poor ground conditions
- One pour
- Reduced siteworks – one level sub-base preparation
- Lightweight, moisture resistant EPS components
- U value  $>0.1 \text{ W/m}^2\text{K}$

# Groundshield F – Ground supported Slab

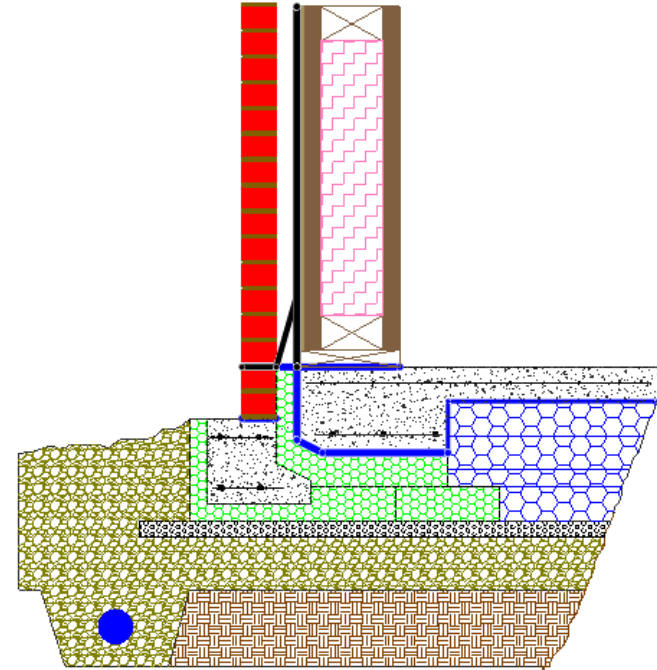
Two Beams

One pour

Low Thermal Bridge



Groundshield F Brick and Block



Groundshield F Timber Frame

# Groundshield F – Ground supported Slab

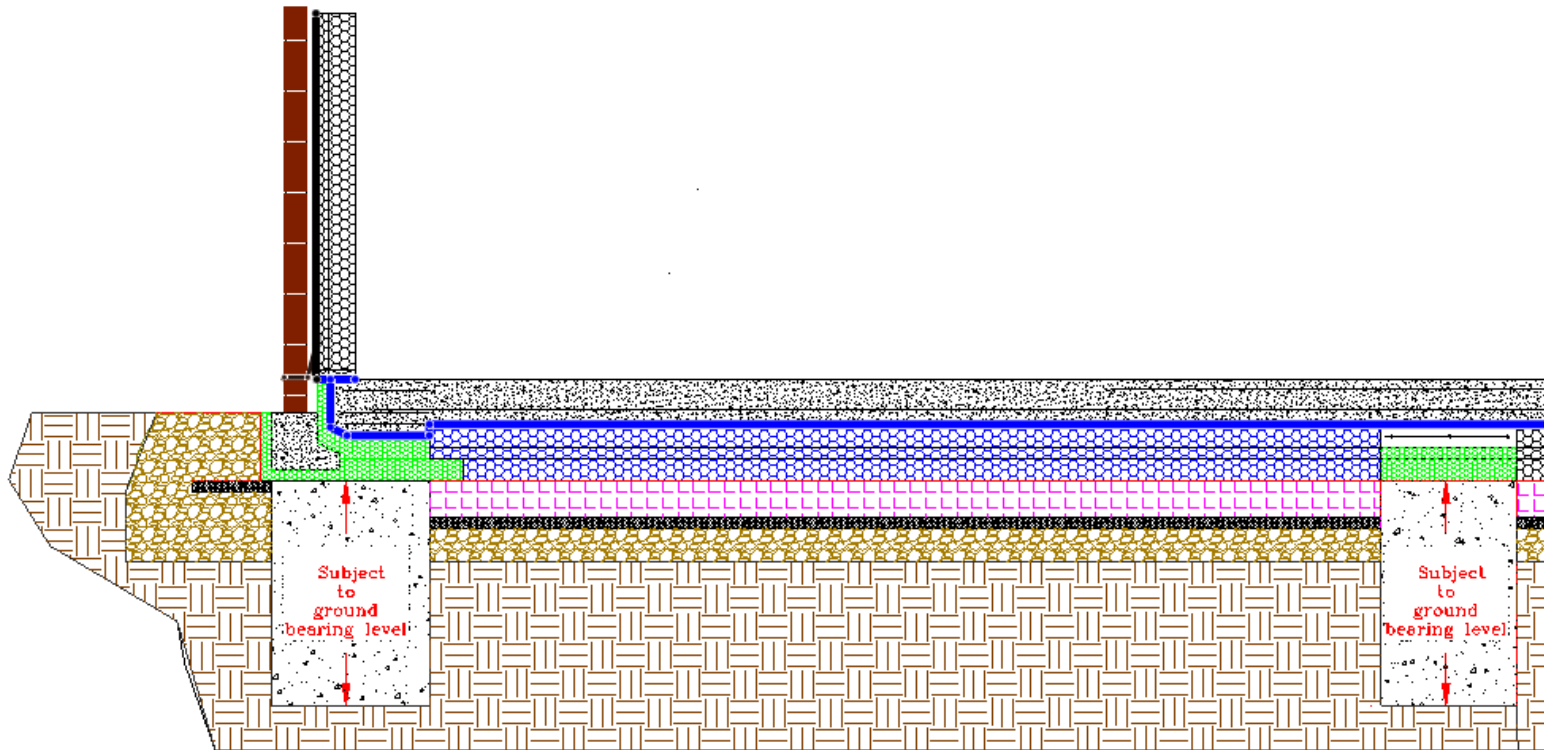
- Single pour
- Reduced siteworks – one level sub-base preparation
- 3 day install for 3 men in a ‘typical house’
- Lightweight, moisture resistant EPS components
- U value  $>0.1 \text{ W/m}^2\text{K}$

# Groundshield F – with Self-Supporting Slab

Two beams  
Beam

No structural  
Slab support

Low Thermal  
Bridges



Groundshield F - Self Supporting Slab - Brick and Timber Frame

# Groundshield F – With Self-supporting Slab

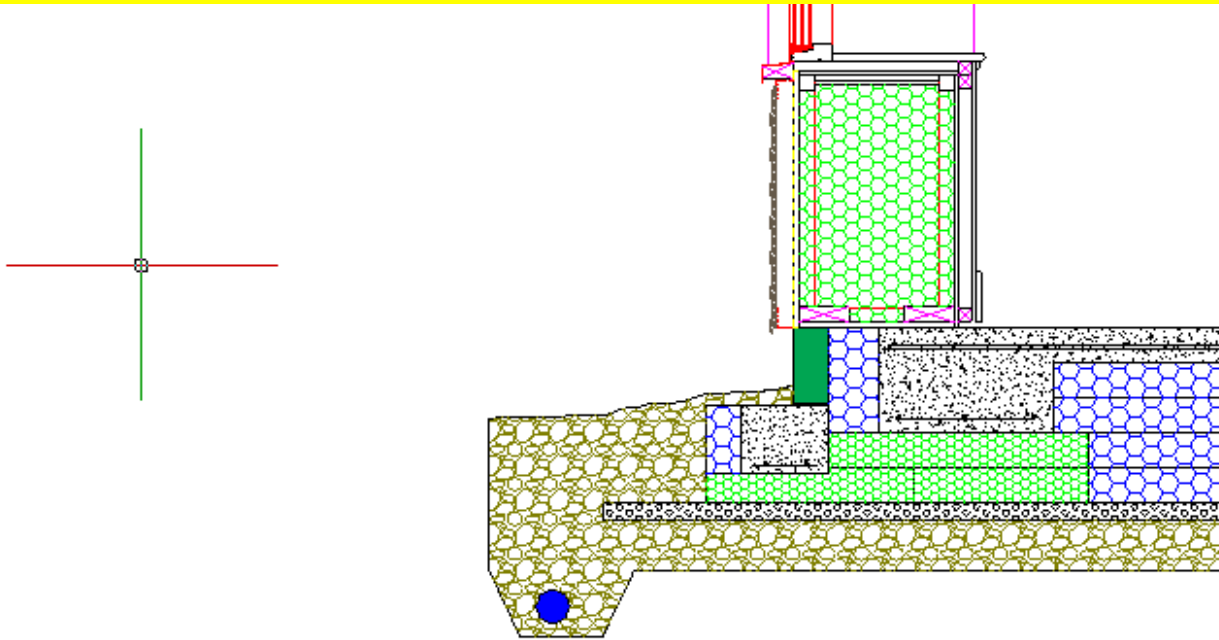
- Ideal for poor/made ground
- One pour for slab/perimeter beams
- 200mm slab
- Lightweight, moisture resistant EPS components
- U value  $>0.1 \text{ W/m}^2\text{K}$

# Groundshield Passive Double L – Timber Frame

Two Beams

Two Pour

Low Thermal  
Bridges



Groundshield Passive Double L - Timber Frame with brick outer

# Groundshield Passive Double L - Timber Frame

- Outstanding thermal values
- Reduced siteworks – One level sub-base preparation
- Lightweight, moisture resistant EPS components



Contact AFT today for your best  
foundation solutions

Work - 01457 863 083

Mobile - 07950 166 390